

9. Bloomfield SF, Rook GA, Scott EA, Shanahan F, Stanwell-Smith R, Turner P. Time to abandon the hygiene hypothesis: new perspectives on allergic disease, the human microbiome, infectious disease prevention and the role of targeted hygiene. *Perspect Public Health*. 2016;136(4):213-224.
10. Herbst T, Sichelstiel A, Schar C, et al. Dysregulation of allergic airway inflammation in the absence of microbial colonization. *Am J Respir Crit Care Med*. 2011;184(2):198-205.

SUPPORTING INFORMATION

Additional supporting information may be found online in the Supporting Information section.

DOI: 10.1111/all.14325

Highly sensitive ELISA-based assay for quantification of allergen-specific IgE antibody levels

To the Editor,

Allergy is the most common immunologically mediated hypersensitivity disease worldwide affecting upper and lower respiratory tract, the skin as well as the gastrointestinal tract and may cause life-threatening anaphylaxis.¹ Immunoglobulin E (IgE) occurs in extremely low amounts in blood and tissues but is the key immunoglobulin in allergy. The quantification of allergen-specific IgE levels (sIgE) in serum and body fluids is important because sIgE concentrations are useful to define clinical phenotypes of allergy and to predict the intensity of allergic reactions.²⁻⁵ However, quantification of sIgE requires special instruments (eg, ImmunoCAP) that are available only in industrialized countries, large volumes of serum and is quite expensive.⁶ Therefore, the goal of our study was to establish a quantitative method for measuring allergen-specific IgE based on a simple ELISA technology which can be implemented and used in all parts of the world. The user will thus need only equipment for ELISA, reagents, detection antibodies and test allergens plus reagents for the IgE standard curve.

In order to establish a standard for ELISA-based quantification of allergen-specific human IgE, a human monoclonal chimeric IgE antibody (IgEmoAb)⁷ consisting of the variable region of a mouse IgG₁ antibody specific for the major birch pollen allergen Bet v 1, which had been fused to the human epsilon heavy chain, was expressed and purified from hybridoma cells by affinity chromatography to >95% purity (Figure S1A). Under non-reducing conditions, purified IgEmoAb migrates as a distinct single band of approximately 250 kDa molecular weight in SDS-PAGE, while under reducing conditions, two distinct bands which correspond to the heavy and light chain became visible at approximately 100 and 20 kDa, respectively (Figure S1A). IgEmoAb reacted specifically with anti-human IgE antibodies under non-reducing conditions, and under reducing conditions, the heavy chain showed selective anti-IgE reactivity by immunoblotting (Figure S1B). Structural analysis of IgEmoAb by

circular dichroism showed that it assumed a predominant beta-sheet fold with a minimum signal around 217 nm and a maximum near 198 nm (Figure S1C).

Using IgEmoAb and Bet v 1, we next established by ELISA a standard curve allowing to measure and quantify sIgE. A series of dilutions of IgEmoAb ranging from 2.42 to 2420 ng/mL was exposed to ELISA plate-bound IgE yielding standard curves with a linear range of approximately 2.42-242 ng/mL IgE depending on the time of assay development (Figure 1A). Figure S2 shows the OD values obtained for the dilution series of IgEmoAb determined by ELISA at different time points of assay development, that is, (after 5, 10, 15, and 20 minutes) yielding optimal results from 5 to 10 minutes of development with the given detection antibodies and color reagents. The different dilutions of IgEmoAb were also measured using Streptavidin ImmunoCAPs prepared with the same recombinant Bet v 1 preparation used in the ELISA experiments. The concentrations of IgEmoAb, that is, 2.42, 24.2, 242, and 2420 ng/mL corresponded to the following ImmunoCAP results: 0.34, 3.28, 33.1, and >100 kU_A/L showing that the dilutions of the IgEmoAb standard were correct down to few nanograms per mL without loss of activity. However, we noted that the ImmunoCAP determination of the concentrations of IgEmoAb was different (ie, yielding approx. 30%) from the results obtained by microBCA protein determination which may be due to differences between the ImmunoCAP IgE standard and IgEmoAB (data not shown). Accordingly, a "real conversion factor" of 7 ng/mL = 1 kUA/L for calculating IgE concentrations had to be introduced.

Based on a standard curve established with IgEmoAb, Bet v 1-specific IgE concentrations were quantified in 19 sera from clinically well-characterized birch pollen allergic patients by ELISA (ng/ml) (Tables S1 and S2). Table S2 displays the OD levels, the corresponding ng/mL concentrations of Bet v 1-specific IgE, and the results from the ImmunoCAP and ImmunoCAP ISAC measurements

This is an open access article under the terms of the Creative Commons Attribution License, which permits use, distribution and reproduction in any medium, provided the original work is properly cited.

© 2020 The Authors. *Allergy* published by European Academy of Allergy and Clinical Immunology and John Wiley & Sons Ltd

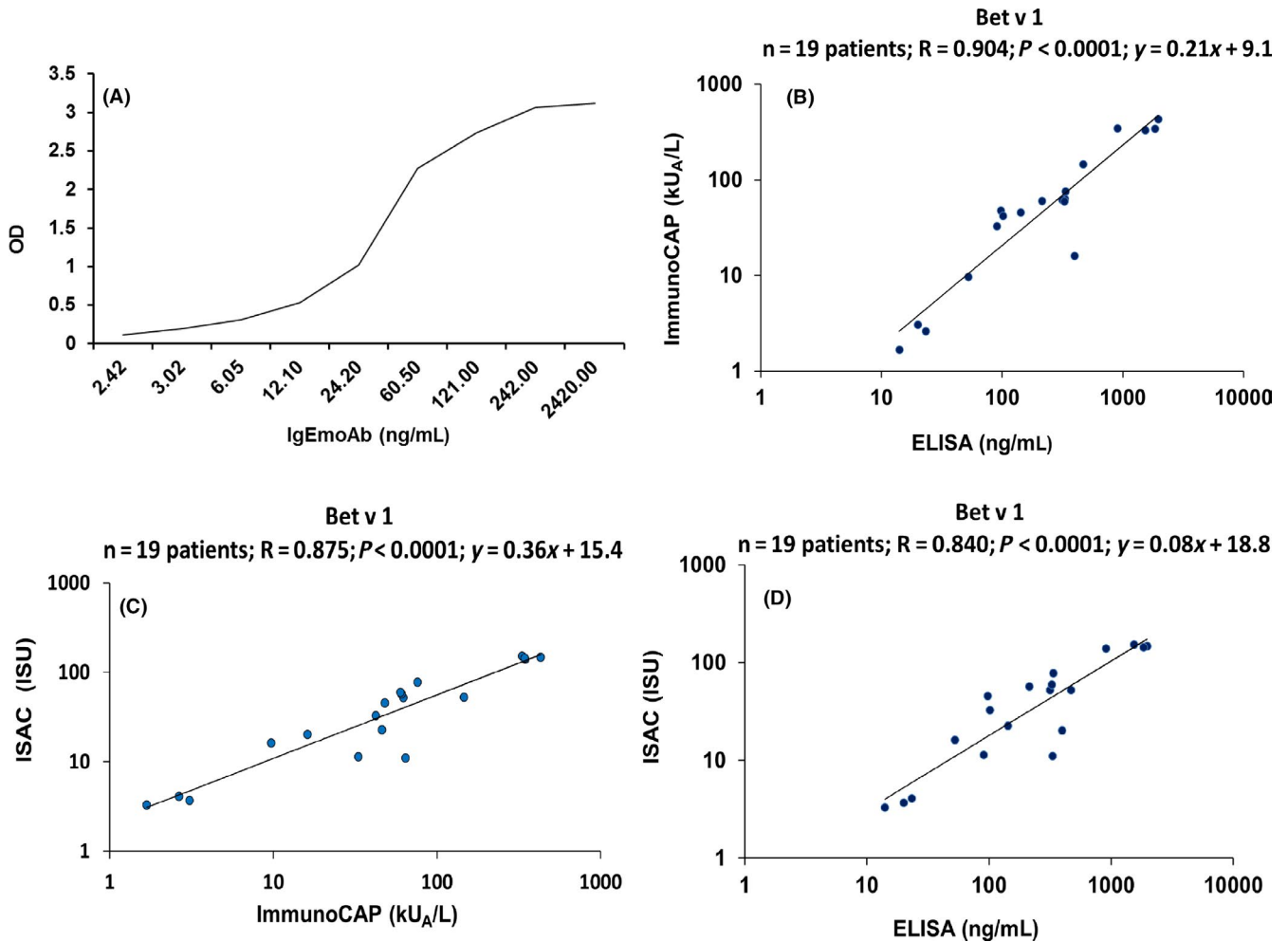


FIGURE 1 Association of different concentrations of IgEoAb (x-axis: ng/mL) with IgE reactivities to Bet v 1 determined as optical density (OD) values (y-axis) by ELISA (A). Correlation of Bet v 1-specific IgE levels determined in sera from 19 birch pollen allergic patients by different methods. B, ImmunoCAP (kU_A/L) (y-axis) versus ng/ml determined by ELISA (x-axis). C, ISU (ISAC standardized unit) values determined by ImmunoCAP ISAC (y-axis) vs ImmunoCAP (kU_A/L) (x-axis) and D, ISU values determined by ImmunoCAP ISAC (y-axis) vs ng/mL determined by ELISA (x-axis). Correlation coefficients (r), regression equations, and statistical significances (P values) are shown in the top upper corner of graph

in detail. We noted a strong significant correlation between the Bet v 1-specific IgE concentrations determined in ng/ml with the ELISA and in kU_A/L ImmunoCAP results ($r = .904$, $P < .0001$, 95% CI 0.756-0.964; Figure 1B). In fact, Bet v 1-specific IgE levels measured by ELISA correlated even better with ImmunoCAP results than IgE levels measured with ImmunoCAP ISAC chip technology ($r = 0.875$, $P < .0001$, 95% CI 0.692-0.953; Figure 1C). Nevertheless, results of the quantitative IgE ELISA correlated also significantly with IgE levels measured with ImmunoCAP ISAC chip technology ($r = .840$, $P < .0001$, 95% CI 0.616-0.939) (Figure 1D). In summary, strong correlations of Bet v 1-specific IgE levels measured by ELISA with those determined by ImmunoCAP and ImmunoCAP ISAC technology were obtained.

Next, we investigated whether the IgEoAb-based standard curve is also suitable for the quantification of patients' IgE to an allergen molecule unrelated to Bet v 1. For this purpose, we selected the major cat allergen Fel d 1 which besides Bet v 1 is

one of the most frequently recognized allergens in the Russian population.^{5,8} Quantitative IgE ELISA was used to determine Fel d 1-specific IgE levels in 19 cat allergic patients using different serum dilutions. Detailed results of quantitative IgE ELISA and of ImmunoCAP are shown in Tables S3 and S4. A strong significant correlation was obtained between Fel d 1-specific IgE concentrations quantified with the IgE ELISA (ng/mL) and with the ImmunoCAP results (kU_A/L) ($r = .984$, $P < .0001$, 95% CI 0.956-0.994; Figure 2A) demonstrating that the quantitative ELISA can be used for quantification of specific IgE levels against different allergens, for example, Fel d 1. Interestingly, we noted for three patients with clinically confirmed symptoms of cat allergy ImmunoCAP measurements were below the threshold of 0.1 kU_A/L but we were able to detect and quantify Fel d 1-specific IgE with the IgE ELISA (Table S3, patients C4, C5, and C12). Of note, we found that the results obtained for different dilutions of the sera delivered highly comparable results. Results of IgE level

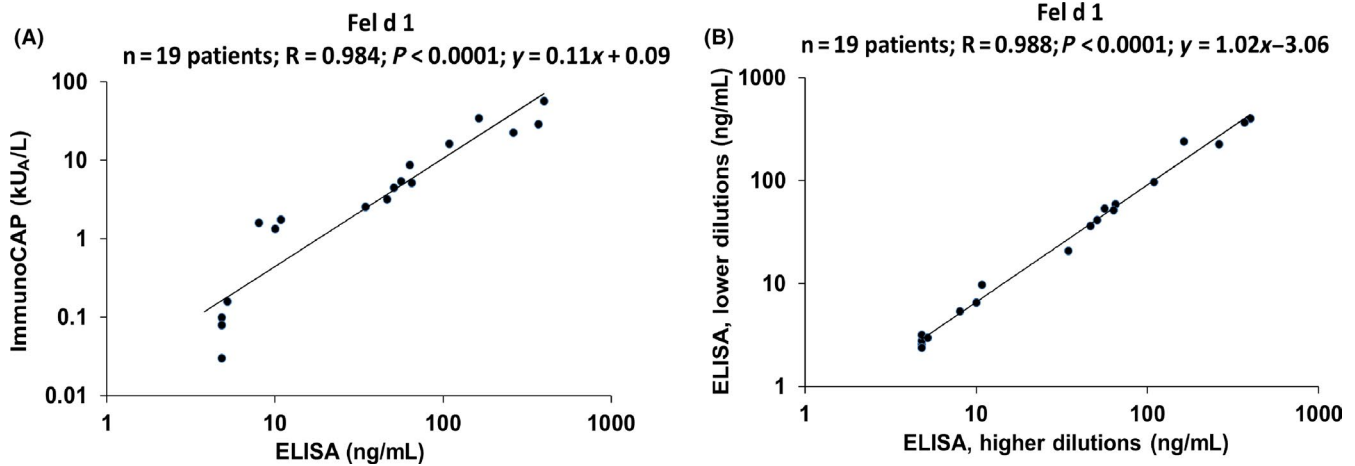


FIGURE 2 Correlation of Fel d 1-specific IgE levels determined in sera from 19 cat allergic patients by ImmunoCAP (kU_A/L) (y-axis) versus ng/ml determined by ELISA (x-axis) (A). Correlation of Fel d 1-specific IgE levels determined in lower (y-axis) and higher (x-axis) sera dilutions from 19 cat allergic patients from Table S3 (B). Correlation coefficients (r), regression equations, and statistical significances (P values) are shown in the top upper corner of graph

assessment obtained from 1:2 sera dilutions and 1:4 sera dilutions from the cat allergic patients (shown in Table S4) were compared, and a strong and significant correlation was noted ($r = .988$, $P < .0001$, 95% CI 0.967-0.996; Figure 2B).

The quantitative IgE ELISA assay should be useful for laboratories in less developed countries which cannot afford expensive IgE test systems for routine allergy diagnosis taking advantage of molecular allergy diagnosis.^{9,10} Before extensive use, broader clinical studies correlating IgE concentrations to clinical signs may be warranted. In fact, the price for a quantitative IgE determination for one allergen should cost less than 10% than by ImmunoCAP; however, the time required for testing will be longer. Our assay will therefore be useful in places where work power cost is not a major issue and the results are desired in a higher-throughput format as well as for cases (eg, research) where regulations are of minor importance. Furthermore, the assay should allow a flexible testing of different allergen molecules which can be kept on stock and used depending on the clinical questions and diagnostic needs required. To achieve these goals, the authors will make efforts to make available the key reagents for the standard curve (ie, IgE_{mo}Ab and rBet v 1) to the community. In summary, we provide a simple, inexpensive, sensitive and accurate method for measuring allergen-specific IgE concentrations in serum and body fluids to facilitate the diagnosis of IgE-associated allergy in the world.

ACKNOWLEDGMENTS

This study was supported by a Megagrant of the Government of the Russian Federation, grant number 14.W03.31.0024, by the "Russian Academic Excellence Project 5-100", by the Austrian Science Fund (FWF) projects F4605, DK1248-B13, and F4613, by The Swedish Research Council, Region Stockholm (ALF-project), The Swedish Heart-Lung Foundation and by The Swedish Cancer and Allergy Foundation.

CONFLICT OF INTEREST

RV has received research grants from HVD Life Sciences, Vienna, Austria and Viravaxx, Vienna, Austria, and serves as consultant for Viravaxx. MvH has received lecture fees from Thermo Fisher Scientific and consultancy fees from Biomay AG, Vienna, Austria, and Hycor Biomedical LLC, CA, US, outside of the submitted work. Other authors have no conflict of interest to declare.

Antonina Karsonova¹
 Ksenja Riabova¹
 Sergio Villazala-Merino²
 Raffaella Campana³
 Verena Niederberger²
 Julia Eckl-Dorna²
 Renate Fröschl⁴
 Thomas Perkmann⁴
 Yury V. Zhernov⁵
 Olga G. Elisyutina⁵
 Elena S. Fedenko⁵
 Musa R. Khaitov⁵
 Daria Fomina^{1,6}
 Evgeniy Beltukov⁷
 Marianne van Hage⁸ 
 Hans Grönlund⁹ 
 Rudolf Valenta^{3,10} 
 Alexander Karaulov¹
 Mirela Curin³ 

¹Laboratory of Immunopathology, Department of Clinical Immunology and Allergy, Sechenov First Moscow State Medical University, Moscow, Russian Federation

²Department of Otorhinolaryngology, Medical University of Vienna, Vienna, Austria

³Division of Immunopathology, Department of Pathophysiology and Allergy Research, Center for Pathophysiology, Infectiology and Immunology, Medical University of Vienna, Vienna, Austria

⁴Department of Laboratory Medicine, Medical University of Vienna, Vienna, Austria

⁵National Research Center - Institute of Immunology FMBA of Russia, Moscow, Russian Federation

⁶City Hospital #52, Moscow, Russian Federation

⁷Ural State Medical University, Ekaterinburg, Russian Federation

⁸Division of Immunology and Allergy, Department of Medicine Solna, Karolinska Institutet and Karolinska University Hospital, Stockholm, Sweden

⁹Department of Clinical Neuroscience, Therapeutic Immune Design Unit, Karolinska Institutet, Stockholm, Sweden

¹⁰Karl Landsteiner University for Healthcare Sciences, Krems, Austria

Correspondence

Mirela Curin, Department of Pathophysiology and Allergy Research, Center for Pathophysiology, Infectiology and Immunology, Medical University of Vienna, Währinger Gürtel 18-20, Vienna A-1090, Austria.
Email: mirela.curin@meduniwien.ac.at

ORCID

Marianne van Hage  <https://orcid.org/0000-0003-3091-1596>

Hans Grönlund  <https://orcid.org/0000-0003-4882-7624>

Rudolf Valenta  <https://orcid.org/0000-0001-5944-3365>

Mirela Curin  <https://orcid.org/0000-0003-2575-4127>

REFERENCES

1. Anto JM, Bousquet J, Akdis M, et al. Mechanisms of the Development of Allergy (MeDALL): Introducing novel concepts

- in allergy phenotypes. *J Allergy Clin Immunol.* 2017;139:388-399.
2. Westman M, Lupinek C, Bousquet J, et al. Early childhood IgE reactivity to pathogenesis-related class 10 proteins predicts allergic rhinitis in adolescence. *J Allergy Clin Immunol.* 2015;135:e1-11.
3. Wickman M, Lupinek C, Andersson N, et al. Detection of IgE reactivity to a handful of allergen molecules in early childhood predicts respiratory allergy in adolescence. *EBioMedicine* 2017;26:91-99.
4. Grönlund H, Adédoyin J, Reininger R, et al. Higher immunoglobulin E antibody levels to recombinant Fel d 1 in cat-allergic children with asthma compared with rhinoconjunctivitis. *Clin Exp Allergy.* 2008;38:1275-1281.
5. Elisyutina O, Fedenko E, Campana R, et al. Bet v 1-specific IgE levels and PR-10 reactivity discriminate silent sensitization from phenotypes of birch allergy. *Allergy* 2019;74:2525-2528.
6. van Hage M, Hamsten C, Valenta R. ImmunoCAP assays: Pros and cons in allergology. *J Allergy Clin Immunol.* 2017;140:974-977.
7. Laffer S, Hogbom E, Roux KH, et al. A molecular model of type I allergy: identification and characterization of a nonanaphylactic anti-human IgE antibody fragment that blocks the IgE-FcεpsilonRI interaction and reacts with receptor-bound IgE. *J Allergy Clin Immunol.* 2001;108:409-416.
8. Grönlund H, Bergman T, Sandström K, et al. Formation of disulfide bonds and homodimers of the major cat allergen Fel d 1 equivalent to the natural allergen by expression in *Escherichia coli*. *J Biol Chem.* 2003;278:40144-40151.
9. Levin ME, Botha M, Basera W, et al. Environmental factors associated with allergy in urban and rural children from the South African Food Allergy (SAFFA) cohort. *J Allergy Clin Immunol.* 2019;145:415-426.
10. Gray CL, Levin ME, du Toit G. Egg sensitization, allergy and component patterns in African children with atopic dermatitis. *Pediatr Allergy Immunol.* 2016;27:709-715.

SUPPORTING INFORMATION

Additional supporting information may be found online in the Supporting Information section.

DOI: 10.1111/all.14328

Description of two anaphylaxis phenotypes in children: The utility of a clustering analysis approach

To the Editor,

Anaphylaxis is heterogeneous regarding patients' characteristics, triggers, clinical manifestations, and severity. Clinical anaphylaxis manifestations are various, and their time course is heterogeneous and unpredictable, sometimes life-threatening.¹ The clustering analysis has already been used to identify phenotypes in allergic children, such as atopic dermatitis, asthma, and peanut allergy.^{2,3} Such approach is of interest to better characterize the heterogeneity of allergic diseases and also to provide personalized patient management. Predicting who is the most at risk of severe anaphylaxis reactions would be of a great interest to reduce anaphylaxis morbidity and mortality but remains challenging.

We aimed to approach anaphylaxis heterogeneity by a nonsupervised statistical clustering analysis on a cohort of children (<18 years) admitted to emergency care unit for anaphylaxis.

This study was conducted in a cohort of 482 children (<18 years) admitted in emergency care units for anaphylaxis in three different French regions. The characteristics of these children have been reported before.^{1,4,5} The anaphylaxis was defined according to Sampson's criteria.⁶ The data have been recorded prospectively in one region¹ and retrospectively in the two others.^{4,5} We performed a nonsupervised clustering analysis using 23 variables. The methods and statistical analysis are described (Supplementary Material S1).